

LUMOTAST 75 illuminated pushbutton IP40, flush lens, square collar, momentary, housing
1.15.108.251/0000

4 NC + 4 NO available on request.


General information

Form of lens	flat lens
Colour of collar	black
Form of collar	square

Dimensions

Overall height	7.5 mm
Width of collar	18 mm
Diameter of collar	---
Length of collar	18 mm
Mounting depth	41.5 mm
Mounting hole	16.2 mm

Electrical characteristics

Contact resistance acc. to life max.	200 mΩ
Rated voltage AC max.	250 V
Rated voltage AC/DC min.	12 V
Rated voltage DC max.	220 V
Rated current AC max.	4 A
Rated current AC/DC min.	5 mA
Rated current DC max.	0.2 A
Protection class	II

Mechanical characteristics

Robustness min.	100 N
Operating force max.	6.5 N
Operating travel	2.7 mm
Switching travel NO	0.9 mm
Switching travel NC	1.6 mm

Mechanical design

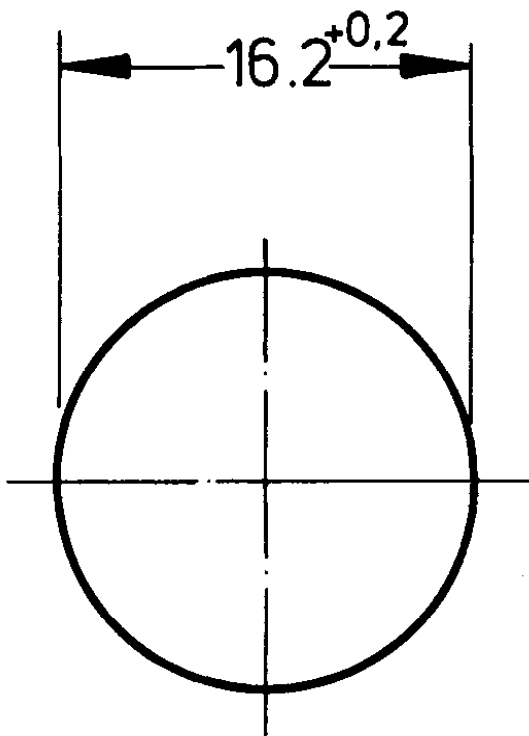
Terminals	solder terminals, tin-plated
Mounting	ring nut
Illuminability	yes
Contact arrangement	1 NC + 1 NO
Contact function	momentary
Contact system	snap-action bridge contact
Contact materials	Ag
Lamp socket	T 4.5

Other specifications

Approvals	ENEC 25 T 55 (70), UL, CSA
Ambient temp. operating min.	-25 °C
Ambient temp. operating with lamp max.	+55 °C

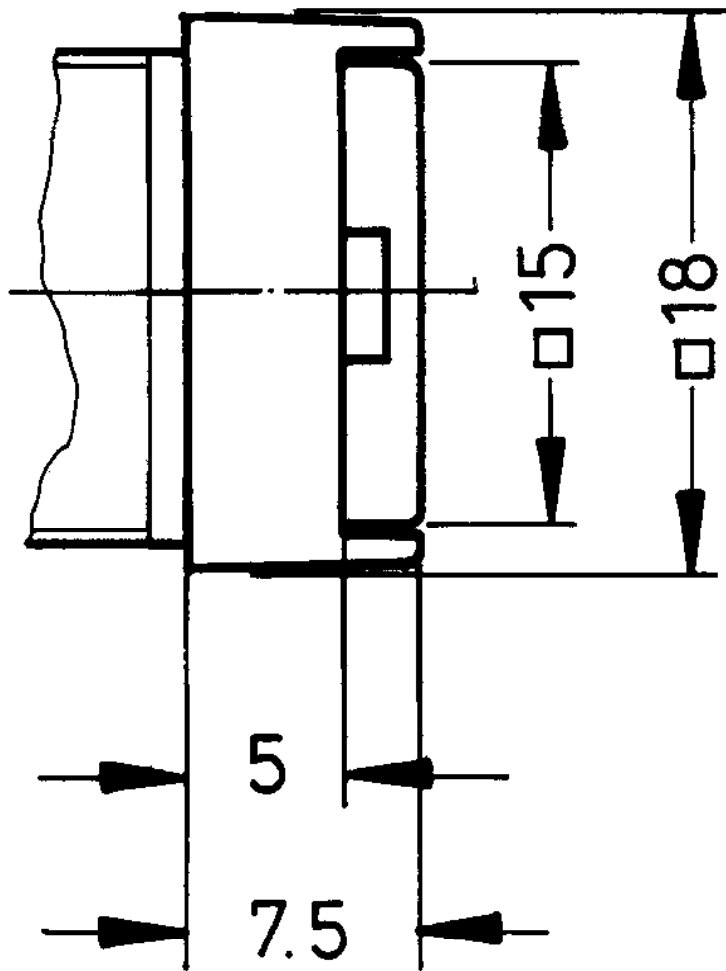
Ambient temp. operating without lamp max.	+70 °C
Flame class acc. to UL 94	V 1
Hot wire ignition acc. to IEC 60695-2-1	yes
Resistance to constant environment	according to IEC 600 68-2-3 and 2-30
Storage temperature max.	+80 °C
Storage temperature min.	-40 °C
Operating life, at 250 V/2 A (operations)	200000 (momentary)
Operating life, at 250 V/4 A (operations)	60000 (momentary), 10000 (latching)
Degree of protection from front side	IP40
Resistance at variable environment	according to IEC 600 68-2-14 and 2-33

Frontpanel cut-out



21.05.2008

MASS



MASS

