

340

Snap-action Microswitches

Miniature

340

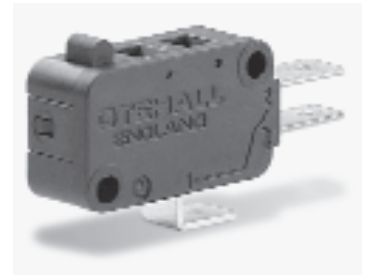
Characteristics ■ wiping contacts
■ leaf spring mechanism
■ 16.1 A at 75 g Actuating Force
■ 3 mm Contact gap

Rating up to 16.1 A at 250 VAC

Dimensions 28.8 × 20.4 × 10.06

Actuator ■ Plunger, plain lever, roller lever

Approvals ENEC



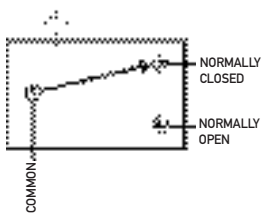
Popular Products

Ordering Reference	Actuating Force (g)	Operating pos. (mm)	Terminal	Contact Gap (mm)	Actuator	Contacts	Electrical rating ENEC
343/40/75	75	14,4–15,17	6,35 × 0,8	1	Plunger	Ag Cd 0	16,1 A, 250 VAC
343/120/420	420	14,15–14,91	6,35 × 0,8	3	Plunger	Ag Cd 0	16 (3)/250 VAC

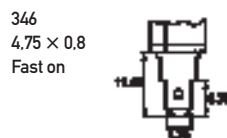
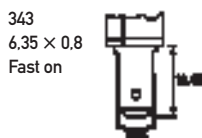
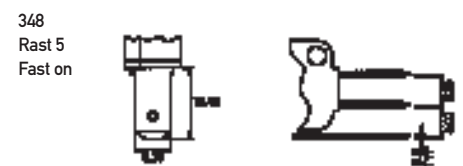
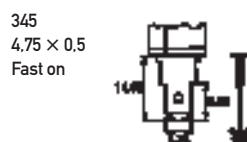
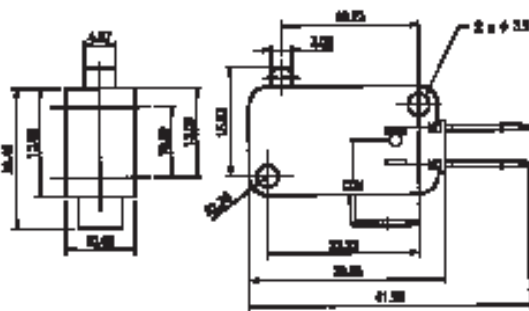
Specifications

Housing	Glass-filled flame retardant Nylon 6,6
Plunger	Glass-filled flame retardant Nylon 6,6
Mechanism	Snap action, single pole leaf spring mechanism
Functions	Change over, Normally open, Normally closed
Contacts	Silver and Silver cadmium oxide
Terminals	Solder, Faston and Rast 5 terminals
Temperature range	-10°C to +85°C
Mechanical life	10 ⁷ cycles minimum (3 mm gap 10 ⁶) (impact-free actuation)
Protection	IP40 (enclosure)
Mounting	Side mounting
Actuators	Plunger, plain lever, roller lever

Circuit diagram



Dimensions



Recommended maximum electrical ratings A3 shown below

Versions	ENEC	UL
75 g	16.1 A, 250 VAC, 10 E3, T85	N/a
3 mm Wide gap	16(3) A, 250 VAC, 50 E3, T85	N/a

Operating Characteristics

Actuator	Reference	Actuating Force Maximum (g)	Release Force Minimum (g)	Free Position Maximum (mm)	Operating Position	Length (mm)	Movement Differential Maximum (mm)	Overtravel Minimum (mm)
Plunger	34-/40/75	75	25	15.93	14.4-15.17		0.25	1.32
	34-/120/420	420	120	15.93	14.15-14.91		0.76	1.06
Plain lever (Back position)	ZD0			16.99		22.56		
	ZD1			18.61		33.9		
	ZD2			25.8		84.43		
Roller lever	ZDS0			22.15		19.67		
	ZDS1			23.86		31.7		

Ordering Reference

Type	34		
Terminal type	2	solder	
	3	6,35 × 0,8 fast-on	
	5	4,75 × 0,5 fast-on (340 only)	
	6	4,75 × 0,8 fast-on (340 only)	
	8	6,35 × 0,8 Rast 5†	
Contact gap	40	1 mm standard	
	120	3 mm	
Operating force	75	75 g	
	420	420 g (3 mm gap)	
Circuit	no digit	change over	
	NO	Normally open	
	NC	Normally closed	
Actuator	no digit	plunger	
	ZD0	Plain lever	22,5 mm
	ZD1	Plain lever	33,9 mm
	ZD2	Plain lever	84,4 mm
	ZDS0	Roller lever	19,67 mm
	ZDS1	Roller lever	31,7 mm