

TP4

Panel Mounted

Push Button

TP4

Panel cut-out (mm) \varnothing 16.2/22.5

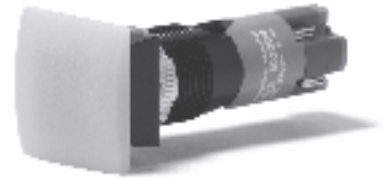
- Characteristics
- mushroom
 - momentary or latching
 - sealed IP40 or IP65
 - wide range of bezels
 - up to 3 contact blocks
 - NO, NC
 - gold plated contact block

Rating 250 VAC, 5 A

Dimensions (mm) 18×24
 24×24
 $\varnothing 24$
 $\varnothing 30$

Actuator mushroom cap in different shapes and colours

Approvals UL, CSA, VDE



Popular products

Ordering Reference	Panel cut-out (mm)	Function	Actuator size (mm)	Actuator style	Environmental protection	Terminals	Electrical rating
TP41LAJ2A4NXX	\varnothing 16.2	Latching	18×24	Non-illuminated, red	IP40	Solder	250 VAC, 5A
TP41LEJ2E4NXX	\varnothing 16.2	Latching	\varnothing 24	Non-illuminated, red	IP40	Solder	250 VAC, 5A
TP41MAJ2A4NXX	\varnothing 16.2	Momentary	18×24	Non-illuminated, red	IP40	Solder	250 VAC, 5A
TP41MEJ2E4NXX	\varnothing 16.2	Momentary	\varnothing 24	Non-illuminated, red	IP40	Solder	250 VAC, 5A
TP42LHJ2H4NXX	\varnothing 22.5	Latching	\varnothing 30	Non-illuminated, red	IP65	Solder	250 VAC, 5A
TP42MHJ2H4NXX	\varnothing 22.5	Momentary	\varnothing 30	Non-illuminated, red	IP65	Solder	250 VAC, 5A

Specifications

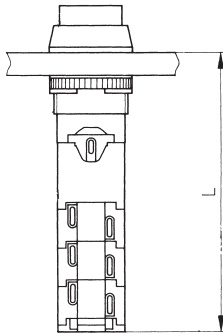
Mechanism	Momentary or latching
Actuating force	Approximately 2.5N – 1 contact block
Mounting	Central fixing with metal lock nut
Protection	IP40, IP65
Bezel material	Thermoplastic or anodized aluminium alloy
Lens material	Polycarbonate – engravable
Illumination	Non-illuminated
Temperature range °C	-30°C to +80°C
Mechanical life	10 ⁶ cycles
Contact block (blocks)	Supplied fitted
Contact block housing	Self-extinguishing duroplastic (UL 94 V0)
Terminal material	Silver alloy with 0.2 µm silver plating, plus 0.4 µm gold plating
Contact resistance	< 30mOhm
Number of contact blocks	1 NO + 1 NC per contact block, up to a maximum of 3 contact blocks per switch
Terminals	Patented flexible solder - suitable for wire diameter 2 × 1.00 mm ² (braided), 4 × 0.75 mm (stranded)
Vibration resistance	1.5mm pp amplitude at 55 Hz

Recommended maximum electrical ratings

Voltage (max) 250 VAC	Resistive load (A) 5.0 (0.7 pf)	Inductive load (A)	Approval UL, CSA, VDE - max. admissible circuit breaker C6A
12 VDC	5.0	3.0	General rating
24 VDC	4.0	2.0	General rating
36 VDC	3.0	1.7	General rating
48 VDC	2.0	1.5	General rating
60 VDC	1.5	1.2	General rating
125 VDC	0.5	0.3	General rating
250 VDC	0.3	0.2	General rating
Electrical life	70,000 cycles at 5A, 250 VAC, 0.7 pf		

TP4

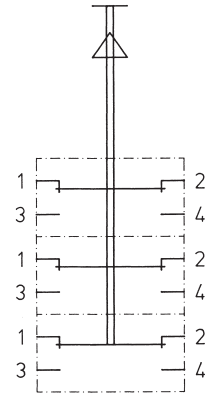
Dimensions



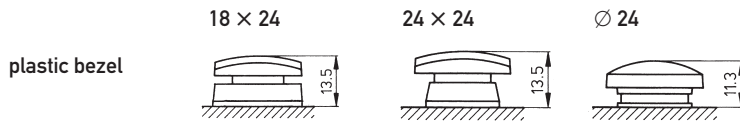
Length in mm

Panel cut-out	16.2 ±0.1	22.5 ±0.1
N° of contact blocks 1	44.5	43.5
2	53.0	52.0
3	61.5	60.5

Circuit diagrams (3 contact blocks)



Bezel and lens heights in mm (switch off position)



plastic bezel

panel cut-out 16.2 ± 0.1 mm

aluminium bezel

panel cut-out 22.5 mm

Front panel thickness 1.0 mm to 10 mm (Aluminium bezel 1.0 mm to 6.5 mm)

Ordering Reference

Range	TP4			
Panel cut-out	1	16.2 mm	Switch body 18 × 24; 24 × 24; Ø 24	
	2	22.5 mm	Switch body Ø 30 only	
Switch body (A)	MAJ1	Momentary	18 × 24 mm	1NO + 1NC IP40
	MAJ2	Momentary	18 × 24 mm	2 NO + 2 NC IP40
	MAJ3	Momentary	18 × 24 mm	3 NO + 3 NC IP40
	LAJ1	Latching	18 × 24 mm	1NO + 1NC IP40
	LAJ2	Latching	18 × 24 mm	2 NO + 2 NC IP40
	LAJ3	Latching	18 × 24 mm	3 NO + 3 NC IP40
	Panel cut-out 16.2 mm (B)	MCJ1	Momentary	24 × 24 mm
MCJ2		Momentary	24 × 24 mm	2 NO + 2 NC IP40
MCJ3		Momentary	24 × 24 mm	3 NO + 3 NC IP40
LCJ1		Latching	24 × 24 mm	1NO + 1NC IP40
LCJ2		Latching	24 × 24 mm	2 NO + 2 NC IP40
LCJ3		Latching	24 × 24 mm	3 NO + 3 NC IP40
(C)		MEJ1	Momentary	Ø 24
	MEJ2	Momentary	Ø 24	2 NO + 2 NC IP40
	MEJ3	Momentary	Ø 24	3 NO + 3 NC IP40
	LEJ1	Latching	Ø 24	1NO + 1NC IP40
	LEJ2	Latching	Ø 24	2 NO + 2 NC IP40
	LEJ3	Latching	Ø 24	3 NO + 3 NC IP40
	Panel cut-out 22.5 mm	MHJ1	Momentary	Ø 30
MHJ2		Momentary	Ø 30	2 NO + 2 NC IP65
MHJ3		Momentary	Ø 30	3 NO + 3 NC IP65
LHJ1		Latching	Ø 30	1NO + 1NC IP65
LHJ2		Latching	Ø 30	2 NO + 2 NC IP65
LHJ3		Latching	Ø 30	3 NO + 3 NC IP65
Panel cut out 16.2 Actuator colour For Switch body (A)	A0	White	18 × 24 mm	Mushroom
	A1	Yellow	18 × 24 mm	Mushroom
	A2	Green	18 × 24 mm	Mushroom
	A3	Blue	18 × 24 mm	Mushroom
	A4	Red	18 × 24 mm	Mushroom
For Switch body style (B)	A5	Black	18 × 24 mm	Mushroom
	C0	White	24 × 24 mm	Mushroom
	C1	Yellow	24 × 24 mm	Mushroom
	C2	Green	24 × 24 mm	Mushroom
	C3	Blue	24 × 24 mm	Mushroom
For Switch body style (C)	C4	Red	24 × 24 mm	Mushroom
	C5	Black	24 × 24 mm	Mushroom
	E0	White	Ø 24 mm	Mushroom
	E1	Yellow	Ø 24 mm	Mushroom
	E2	Green	Ø 24 mm	Mushroom
Panel cut-out 22.5	E3	Blue	Ø 24 mm	Mushroom
	E4	Red	Ø 24 mm	Mushroom
	E5	Black	Ø 24 mm	Mushroom
	H0	White	Ø 30 mm	Mushroom
	H1	Yellow	Ø 30 mm	Mushroom
Housing Colour	H2	Green	Ø 30 mm	Mushroom
	H3	Blue	Ø 30 mm	Mushroom
	H4	Red	Ø 30 mm	Mushroom
	H5	Black	Ø 30 mm	Mushroom
	N	Natural		
illumination	X	Non illuminated		
illumination colour	X	Non illuminated		